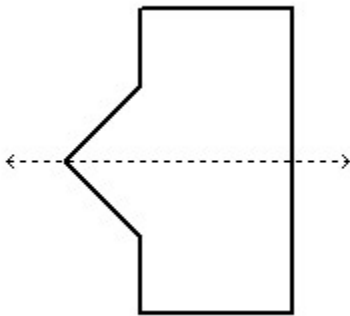
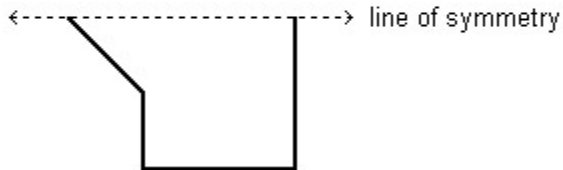


Unit 10 PC Form A

1.  Use pencil and paper to answer the question.

Use a transparent mirror to draw the other half of the figure across the line of symmetry.

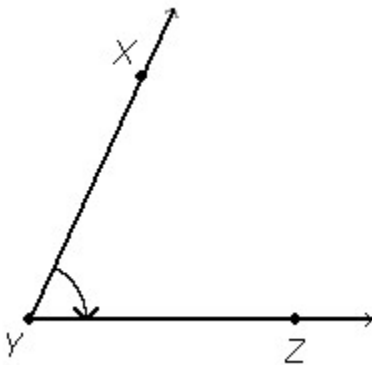


ANSWER:

2.  Use pencil and paper to answer the question.

Determine whether $\angle XYZ$ is acute, right, or obtuse. _____

Find the measure of $\angle XYZ$: _____°



ANSWER: Acute, 65°

3. Add.

$$\frac{4}{11} + \frac{2}{11} = \underline{\hspace{2cm}}$$

ANSWER: $6/11$

Unit 10 PC Form A

4. Add.

$$\underline{\hspace{2cm}} = \frac{1}{4} + \frac{1}{16}$$

ANSWER: 5/16 or an equivalent fraction

5. Subtract.

$$\frac{9}{12} - \frac{2}{12} = \underline{\hspace{2cm}}$$

ANSWER: 7/12 or an equivalent fraction

6. Subtract.

$$\frac{13}{16} - \frac{1}{4} = \underline{\hspace{2cm}}$$

ANSWER: 9/16 or an equivalent fraction

7.  Use pencil and paper to answer the question.

Add or subtract.

a. $\frac{3}{11} + \frac{3}{11} = \underline{\hspace{2cm}}$

b. $\underline{\hspace{2cm}} = \frac{1}{6} + \frac{1}{3}$

c. $\frac{10}{12} - \frac{1}{12} = \underline{\hspace{2cm}}$

d. $\underline{\hspace{2cm}} = \frac{13}{16} - \frac{1}{4}$

ANSWER:

a. $\frac{6}{11}$

b. $\frac{3}{6}$ or $\frac{1}{2}$

c. $\frac{9}{12}$ or $\frac{3}{4}$

d. $\frac{9}{16}$

Unit 10 PC Form A

8.  Use pencil and paper to answer the question.

Add or subtract.

a. $\frac{1}{5} + \frac{3}{5} =$ _____

b. _____ $= \frac{7}{12} + \frac{1}{3}$

c. $\frac{7}{10} - \frac{2}{10} =$ _____

d. _____ $= \frac{8}{9} - \frac{1}{3}$

ANSWER:

a. $\frac{4}{5}$

b. $\frac{11}{12}$

c. $\frac{5}{10}$ or $\frac{1}{2}$

d. $\frac{5}{9}$

Unit 10 PC Form A

9.  Use pencil and paper to answer the question.

Fill in the table of equivalent fractions, decimals, and percents.

Fraction	Decimal	Percent
$\frac{3}{10}$		
$\frac{1}{4}$		
		50%
$\frac{3}{4}$		
	0.4	
$\frac{4}{4}$		

ANSWER:

Fraction	Decimal	Percent
$\frac{3}{10}$	0.3	30%
$\frac{1}{4}$	0.25	25%
$\frac{1}{2}$	0.5	50%
$\frac{3}{4}$	0.75	75%
$\frac{2}{5}$	0.4	40%
$\frac{4}{4}$	1	100%

Unit 10 PC Form A

- 10.
- 
- Use pencil and paper to answer the question.

Fill in the table of equivalent fractions, decimals, and percents.

Fraction	Decimal	Percent
$\frac{2}{5}$		
		60%
	0.75	
		93%

ANSWER:

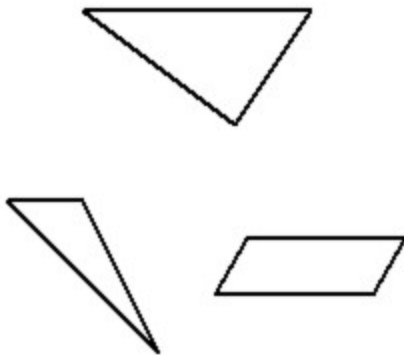
Fraction	Decimal	Percent
$\frac{2}{5}$	0.4	40%
$\frac{75}{100}$ or $\frac{60}{100}$ or $\frac{6}{10}$ or $\frac{3}{5}$	0.6	60%
$\frac{75}{100}$ or $\frac{60}{100}$ or $\frac{6}{10}$ or $\frac{3}{4}$	0.75	75%
$\frac{93}{100}$	0.93	93%

Unit 10 PC Form A

11.  Use pencil and paper to answer the question.

Draw a shape that has no lines of symmetry.

ANSWER: Sample answer:

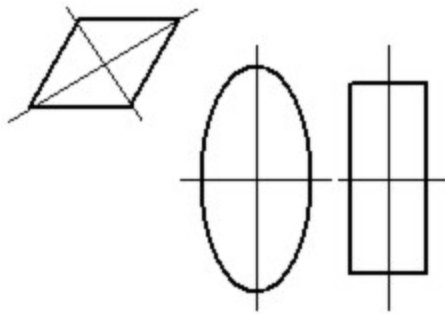


Unit 10 PC Form A

12.  **Use pencil and paper to answer the question.**

Draw a shape that has exactly 2 lines of symmetry. Draw the lines of symmetry.

ANSWER: SAMPLE ANSWER:



13.  **Use pencil and paper to answer the question.**

Use your Geometry Template to complete the following problems.

a. Draw a shape that has no lines of symmetry.

b. Draw a shape that has exactly 1 line of symmetry.
Draw the line of symmetry.

c. Draw a shape that has exactly 2 lines of symmetry.

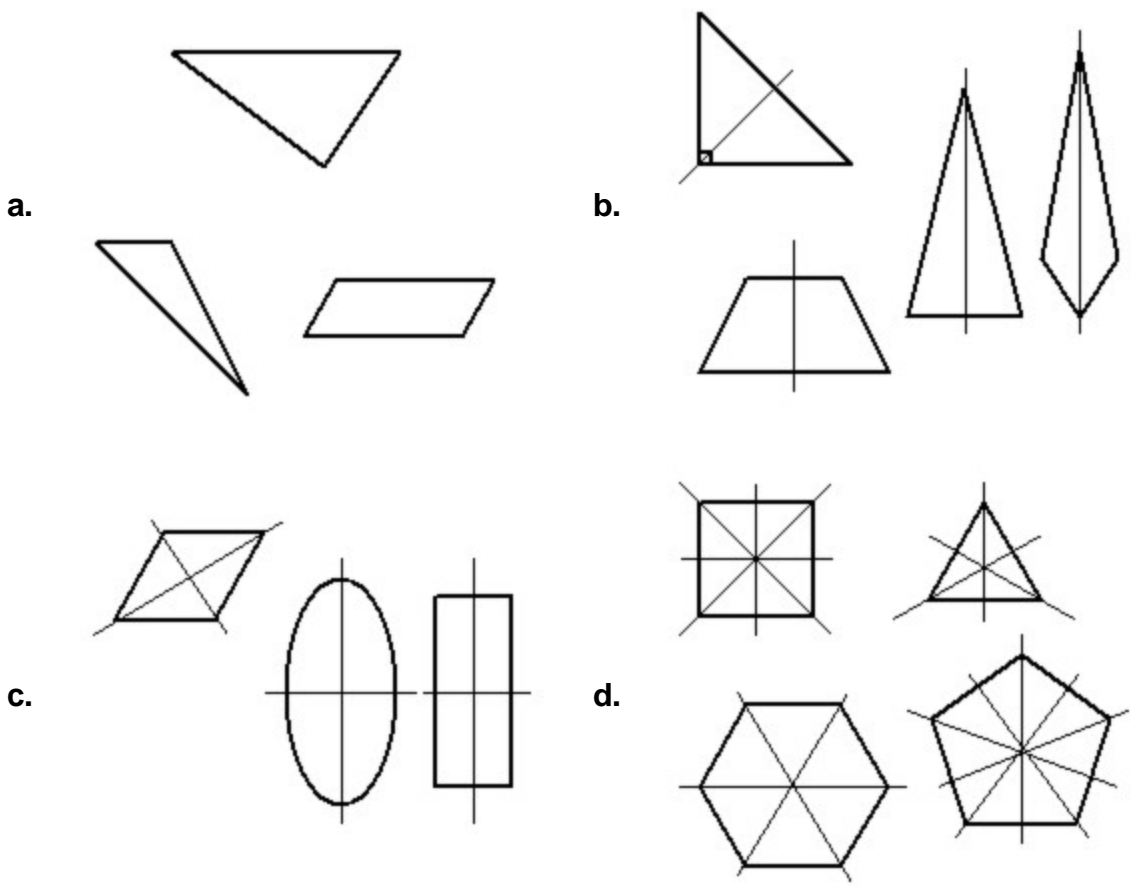
d. Draw a shape that has more than 2 lines of symmetry.

Unit 10 PC Form A

Draw the lines of symmetry.

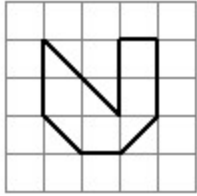
Draw the lines of symmetry.

ANSWER: Sample answers:

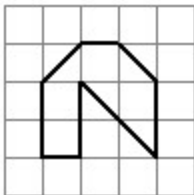


Unit 10 PC Form A

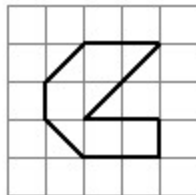
14. Which figure below shows the original figure rotated counter-clockwise $\frac{1}{4}$ turn?



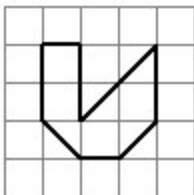
a.



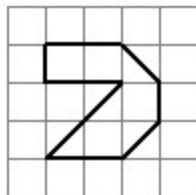
b.



c.



d.

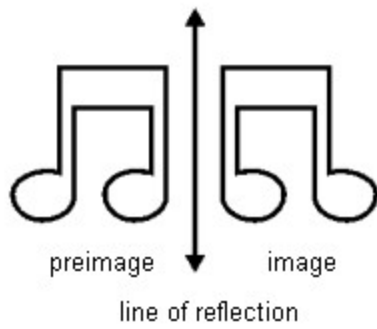
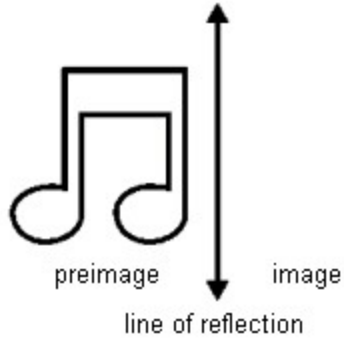


ANSWER: d

Unit 10 PC Form A

15.  Use pencil and paper to answer the question.

Use a transparent mirror to draw the reflection of the preimage.

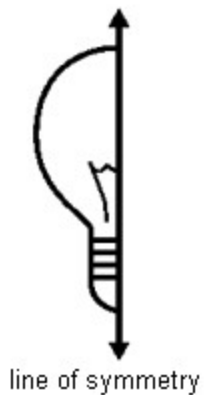


ANSWER:

Unit 10 PC Form A

16.  Use pencil and paper to answer the question.

Use a transparent mirror to draw the other half of the figure across the line of symmetry.



ANSWER:

17. Add.

$$\underline{\hspace{2cm}} = -4 + 7$$

ANSWER: 3

18. Add.

$$-8 + (-5) = \underline{\hspace{2cm}}$$

ANSWER: -13

Unit 10 PC Form A

- 19.
- 
- Use pencil and paper to answer the question.

Add.

a. _____ = $-6 + 13$

b. $-6 + (-10) =$ _____

c. _____ = $4 + (-14)$

d. $-20 + 4 =$ _____

ANSWER:

a. 7

b. -16

c. -10

d. -16

- 20.
- 
- Use pencil and paper to answer the question.

Add.

a. $16 + (-8) =$ _____

b. _____ = $(-17) + 11$

c. $-14 + (-9) =$ _____

d. _____ = $15 + (-15)$

ANSWER:

a. 8

b. -6

c. -23

d. 0

- 21.
- 
- Use pencil and paper to answer the question.

Gerardo had \$17.77 in his piggy bank. Then his mother gave him \$5.25 for doing his weekly chores. He went to the store with his sister but forgot his money. He borrowed \$25.00 from her and spent it all. How much money will he have after he repays his sister? Show your work.

Number model: _____

Answer: _____

ANSWER: Number model: $17.77 + 5.25 + (-25.00) = -1.98$ Answer: $-\$1.98$

22. In the problem below, the multiplication has been done correctly, but the decimal point is missing in the answer. Correctly place the decimal point in the answer.

$5.4 * 6 = 324$

ANSWER: 32.4

Unit 10 PC Form A

23. In the problem below, the multiplication has been done correctly, but the decimal point is missing in the answer. Correctly place the decimal point in the answer.

$$1\ 1\ 8\ 4 = 1.48 * 8$$

ANSWER: 11.84

24. In the problem below, the division has been done correctly, but the decimal point is missing in the answer. Rewrite the answer with the decimal point in the correct place.

$$1\ 2\ 2\ 6 = 61.3 \div 5$$

ANSWER: 12.26

25. In the problem below, the division has been done correctly, but the decimal point is missing in the answer. Rewrite the answer with the decimal point in the correct place.

$$34.8 \div 8 = 4\ 3\ 5$$

ANSWER: 4.35

26.  **Use pencil and paper to answer the question.**

In the problems below, the multiplication or division has been done correctly, but the decimal point is missing in the answer. Rewrite each answer with the decimal point in the correct place.

a. $6.4 * 6 = 3\ 8\ 4$ Answer: _____

b. $1\ 1\ 8\ 4 = 1.48 * 8$ Answer: _____

c. $1\ 9\ 1\ 4 = 95.7 \div 5$ Answer: _____

d. $44.4 \div 8 = 5\ 5\ 5$ Answer: _____

ANSWER: a. 38.4

b. 11.84

c. 19.14

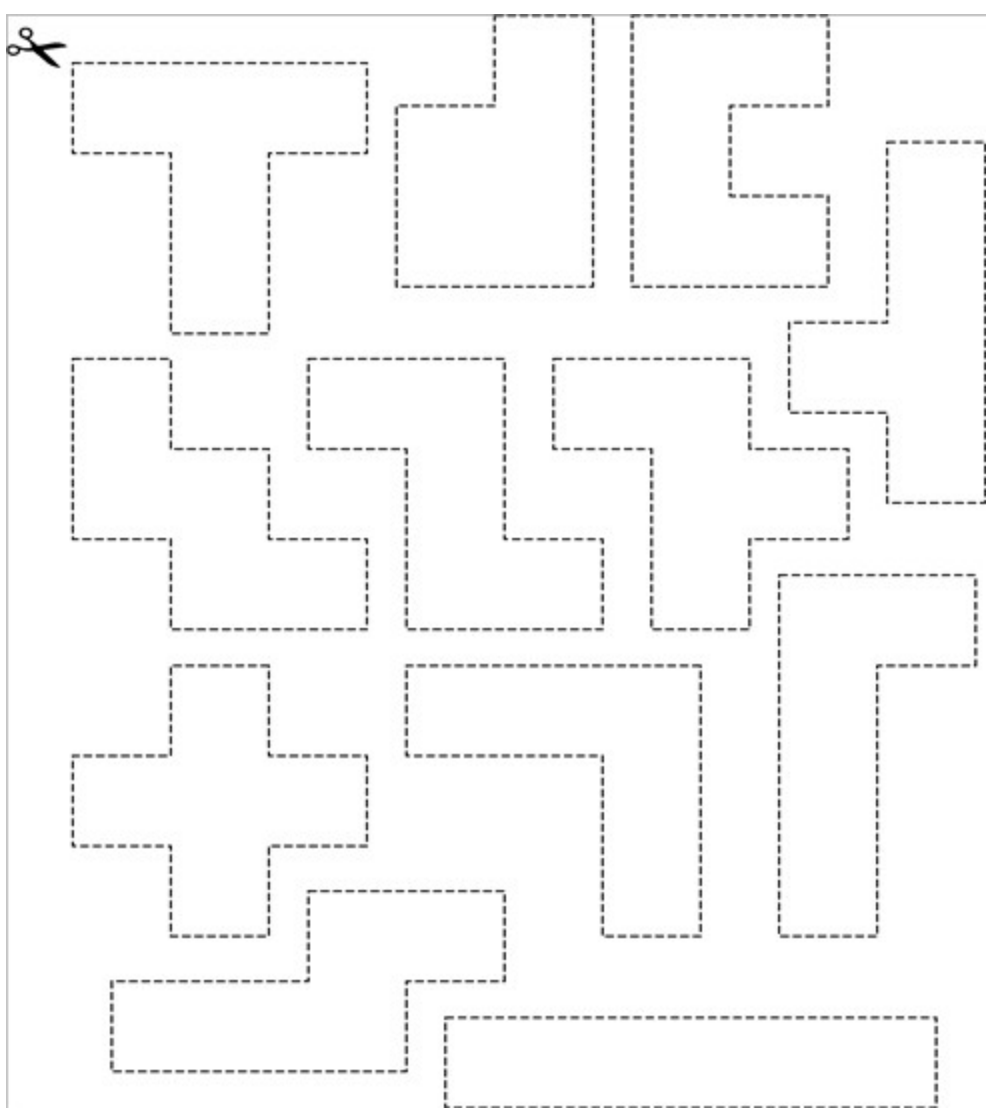
d. 5.55


27.  **Use pencil and paper to answer the question.**

Pentominoes

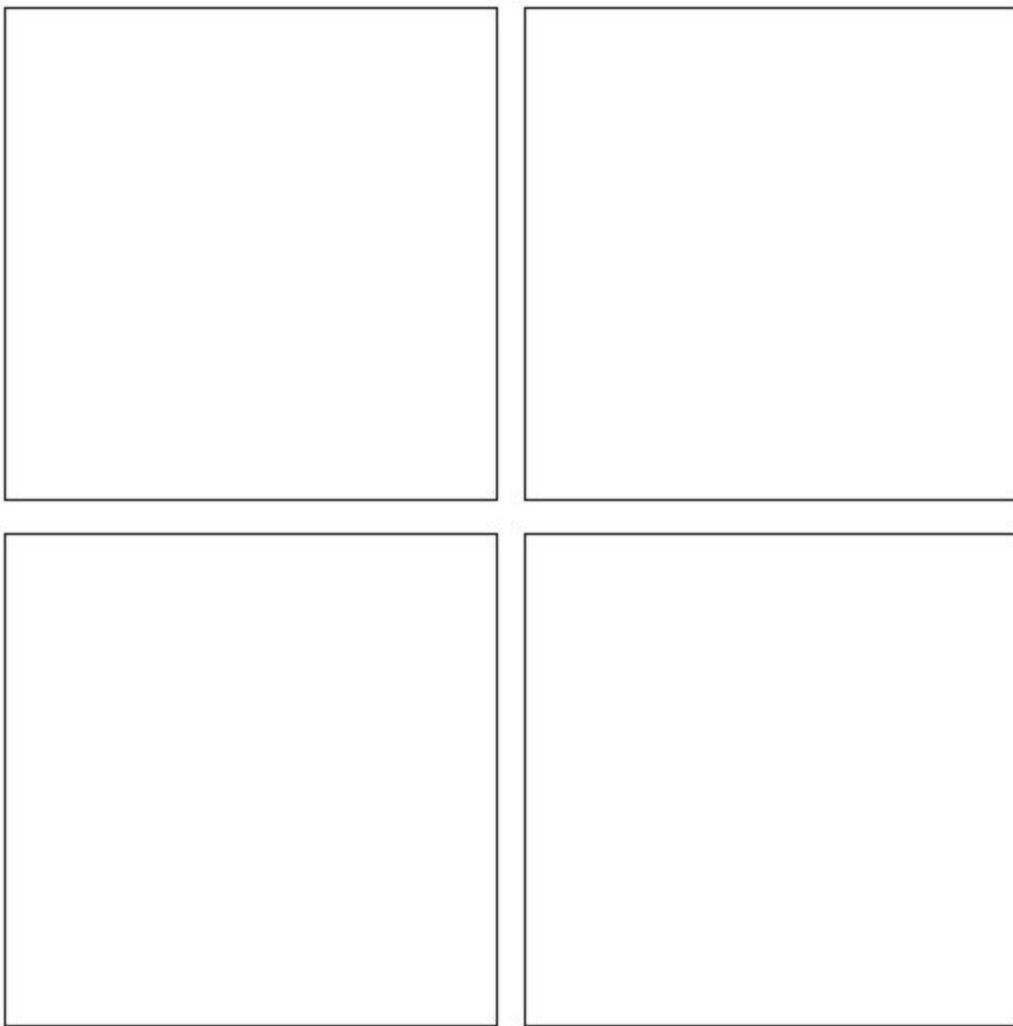
- a. Cut out the pentominoes.

Unit 10 PC Form A



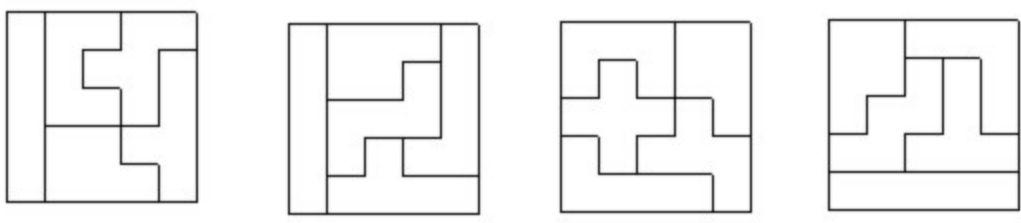
Use them to cover the squares below in different ways. You must use a  in each of your solutions. Record your solutions by tracing the pentominoes.

Unit 10 PC Form A



b. Explain the strategy you used to position  in your solutions. Include the words *flip*, *slide*, and *turn* in your explanation.

ANSWER: a. Here is a possible solution.

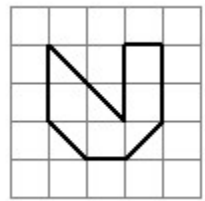


Unit 10 PC Form A

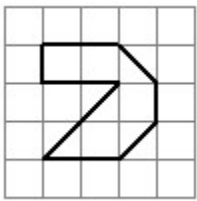
b. First, I placed it in the center along the bottom. Then, I flipped it so it was in the center along the top. After that, I rotated it 90 degrees clockwise and slid it to the right corner. Then I flipped it again to put it in the left corner.

28.  Use pencil and paper to answer the question.

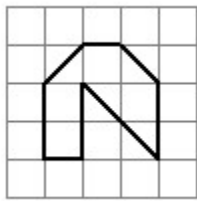
a. Which figure below shows the original figure rotated counter-clockwise $\frac{1}{4}$ turn? _____



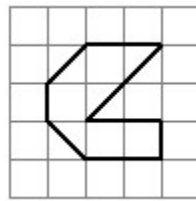
Original



A

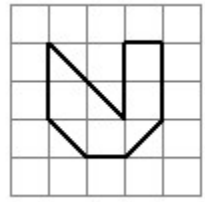


B

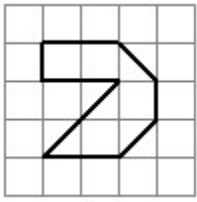


C

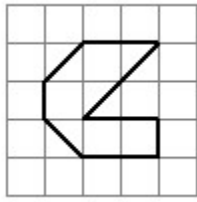
b. Which figure below is the translation (slide) of the original figure? _____



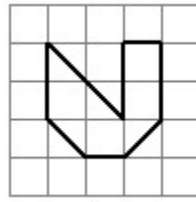
Original



D



E



F

ANSWER: **a. A**
b. F